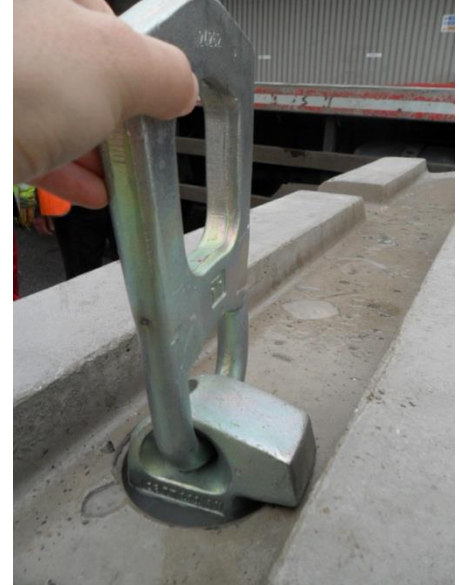


PRODUCT INFORMATION SHEET

V28 Concrete Safety Barrier



[TVCB/ \(new V28\) LIFTER](#)

Specifications

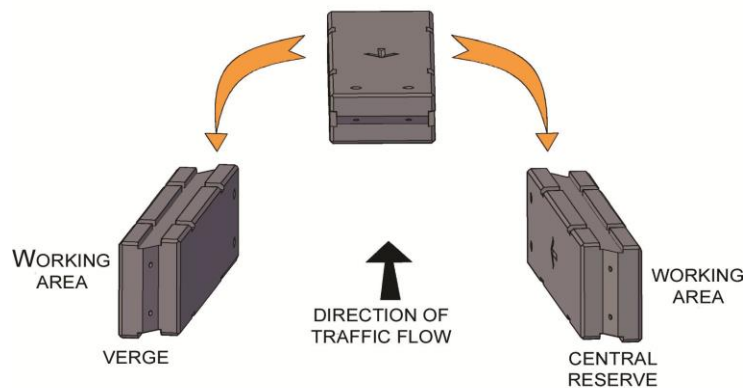
Type	Height (mm)	Width (mm)	Effective/Modular Length (mm)	Overall Length (mm)	Weight (kg)
Intermediate	800	450	3000	3150	2500
Terminator	150/800	450	3000	3075	1570

Road Restraint System Test

EN 1317 'Compliant Road Restraint Systems for Temporary Safety Barriers'

Containment level	Test vehicle	Test speed	Angle	Test deflection	Working width
N1	1500kg car	50mph 80kph	20deg	0.36m	W3
N2	1500kg car	70mph 110kph	20deg	0.39m	W3

Direction of Traffic Flow



Units should be bolted together using approved joining kits and where appropriate, both the leading and the end terminators with the next three intermediate units should be anchored to the carriageway.

Tips!

There are 2 sizes of Concrete Product Grab (3T and 4T) which are available for handling concrete safety barriers.

A site specific risk assessment must be carried out prior to the deployment of any concrete barriers.

Please note: that all safety barriers must be installed by qualified personnel in accordance with sector scheme 2B or 21.