

INSTRUCTIONS FOR THE SAFE USE OF VERTICAL PLATE CLAMPS

Using vertical plate clamps safety

Ensure that the clamp you have is suitable for the size and thickness of plate you intend to lift

Place the clamp in the correct place on the plate to ensure a central lift.

Put the clamp fully onto the plate.

Do not use any *padding* between the plate and the clamp.

Ensure that clamps are not used at an angle to the edge of the plate.

Only lift one plate at a time.

Do not lift plates that are heavier than the plate clamp capacity.

Ensure the clamp is fully locked onto the plate before lifting.

Take care to ensure the plate is supported before releasing the clamp.

In-service inspection and maintenance

Ensure that clamps are kept clean and moving parts are lubricated.

Regularly inspect the clamp for wear, damage, distortion, cracks, bent pins, worn jaws and any other defects likely to cause a danger

If any of the above defects are found remove the clamp from service and refer to a competent person.

INSTRUCTIONS FOR THE SAFE USE OF VERTICAL PLATE CLAMPS

Using vertical plate clamps safety

Ensure that the clamp you have is suitable for the size and thickness of plate you intend to lift

Place the clamp in the correct place on the plate to ensure a central lift.

Put the clamp fully onto the plate.

Do not use any *padding* between the plate and the clamp.

Ensure that clamps are not used at an angle to the edge of the plate.

Only lift one plate at a time.

Do not lift plates that are heavier than the plate clamp capacity.

Ensure the clamp is fully locked onto the plate before lifting.

Take care to ensure the plate is supported before releasing the clamp.

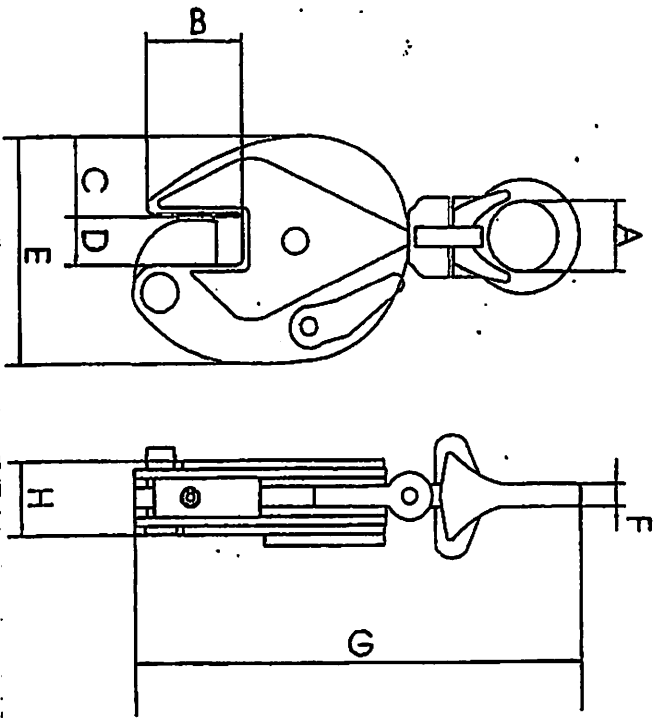
In-service inspection and maintenance

Ensure that clamps are kept clean and moving parts are lubricated.

Regularly inspect the clamp for wear, damage, distortion, cracks, bent pins, worn jaws and any other defects likely to cause a danger

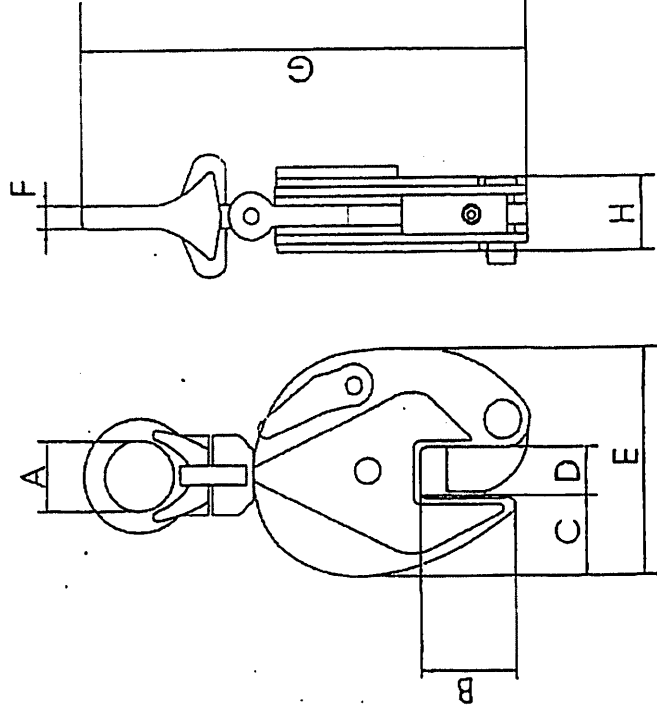
If any of the above defects are found remove the clamp from service and refer to a competent person.

VERTICAL PLATE CLAMPS



CAP. Kg	A mm	B mm	C mm	D mm	E mm	F mm	G mm	H mm
500	30	40	34	0-15	105	10	218	45
750	30	40	36	0-15	105	10	218	45
1000	48	65	50	0-20	145	13	305	63
2000	68	76	62	0-25	175	16	368	68
3000	74	87	58	0-30	218	19	395	90
5000	74	120	72	0-50	235	21	480	100
8000	78	98	88	50-100	285	25	490	115
8000	78	98	88	40-80	285	25	490	115

VERTICAL PLATE CLAMPS



CAP. Kg	A mm	B mm	C mm	D mm	E mm	F mm	G mm	H mm
500	30	40	34	0-15	105	10	218	45
750	30	40	36	0-15	105	10	218	45
1000	48	65	50	0-20	145	13	305	63
2000	68	76	62	0-25	175	16	368	68
3000	74	87	58	0-30	218	19	395	90
5000	74	120	72	0-50	235	21	480	100
8000	78	98	88	50-100	285	25	490	115
8000	78	98	88	40-80	285	25	490	115